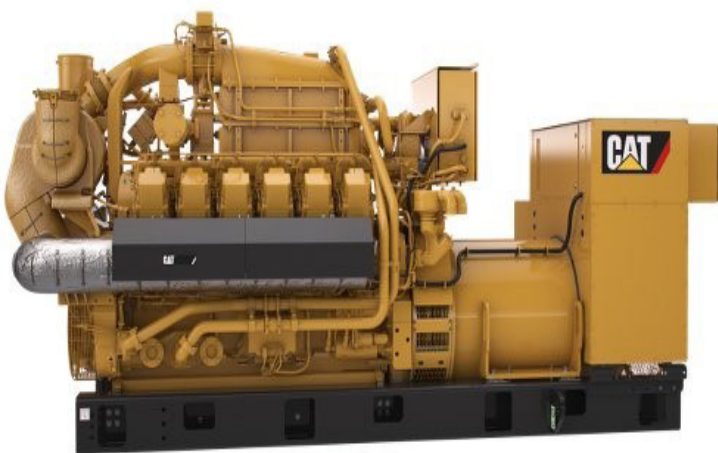


Indassol

FOR SALE

**2 UNUSED 1MW CATERPILLAR G3512E
GAS POWERED GENERATOR SETS**

LOCATION: TURKEY



NATURAL GAS

CONTINUOUS

1000 EKW 1250 KVA

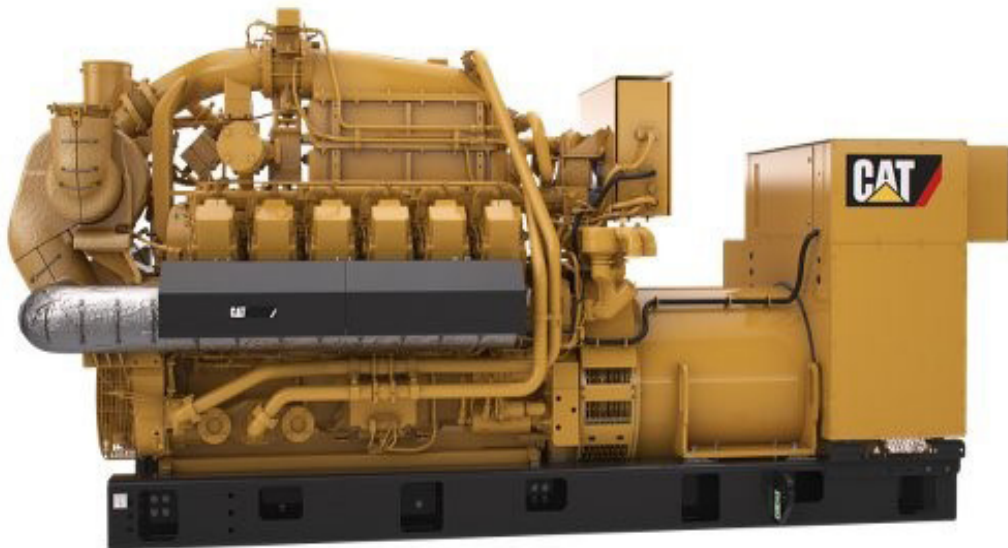
50 HZ 1500 RPM 400 VOLTS

Two unused (never installed) Caterpillar G3512e generators. Year of manufacture 2012/13. Highly flexible gas powered units capable of operating on many gaseous fuel types.

Complete with CAT SR4B GENERATOR, it has been designed in order to match performance and also the output provided by Caterpillar gas engines.

The Caterpillar G3512e is an ideal solution for those seeking a “waste to energy” option.

Caterpillar® is leading the power generation marketplace with power solutions engineered to deliver unmatched flexibility, expandability, reliability and cost-effectiveness.





GAS GENERATOR SETS SPECIFICATION

Maximum Continuous Rating	1000 ekW
Fuel Type	Natural Gas
Maximum Electrical Efficiency	42.2%
Maximum Standby Rating	-
Frequency	50 Hz

GENERATOR SET DIMENSIONS

Length	4594.0 mm
Width	1647.0 mm
Height	2255.0 mm
Dry Weight - Genset	12460.0 kg

ENGINE SPECIFICATIONS

Aspiration	TA
Bore	170.0 mm
Displacement	52.0 l
Engine Model	G3512E
Stroke	190.0 mm

GENERATOR SET SPECIFICATIONS

Speed	1500 rpm
-------	----------

Indassol

For further information contact
Nigel Naden
Direct Dial: +44 (0) 1625 820212
Mobile: +44 (0) 7775 604 208
E-mail: nnaden@indassol.com



Industrial Asset Solutions Limited

Longcroft House, 2-8 Victoria Avenue
Bishopsgate, London EC2M 4NS
United Kingdom

Switchboard: + 44 (0) 20 3206 1208
Email: info@indassol.com

www.indassol.com